





REFERENDUM INFORMATION

Q1 REBUILD HALES CORNERS ELEMENTARY

WHAT IS ON THE BALLOT TUESDAY APRIL 7TH?

QUESTION 1

REBUILD HALES CORNERS ELEMENTARY SCHOOL
NOT TO EXCEED \$22.5 MILLION



- Rebuild elementary school for approximately 675 students in early childhood and grades K4-5 on the existing site
- Retire and remove the existing Hales Corners Elementary and convert that area into expanded parking and activity/green space

QUESTION 2

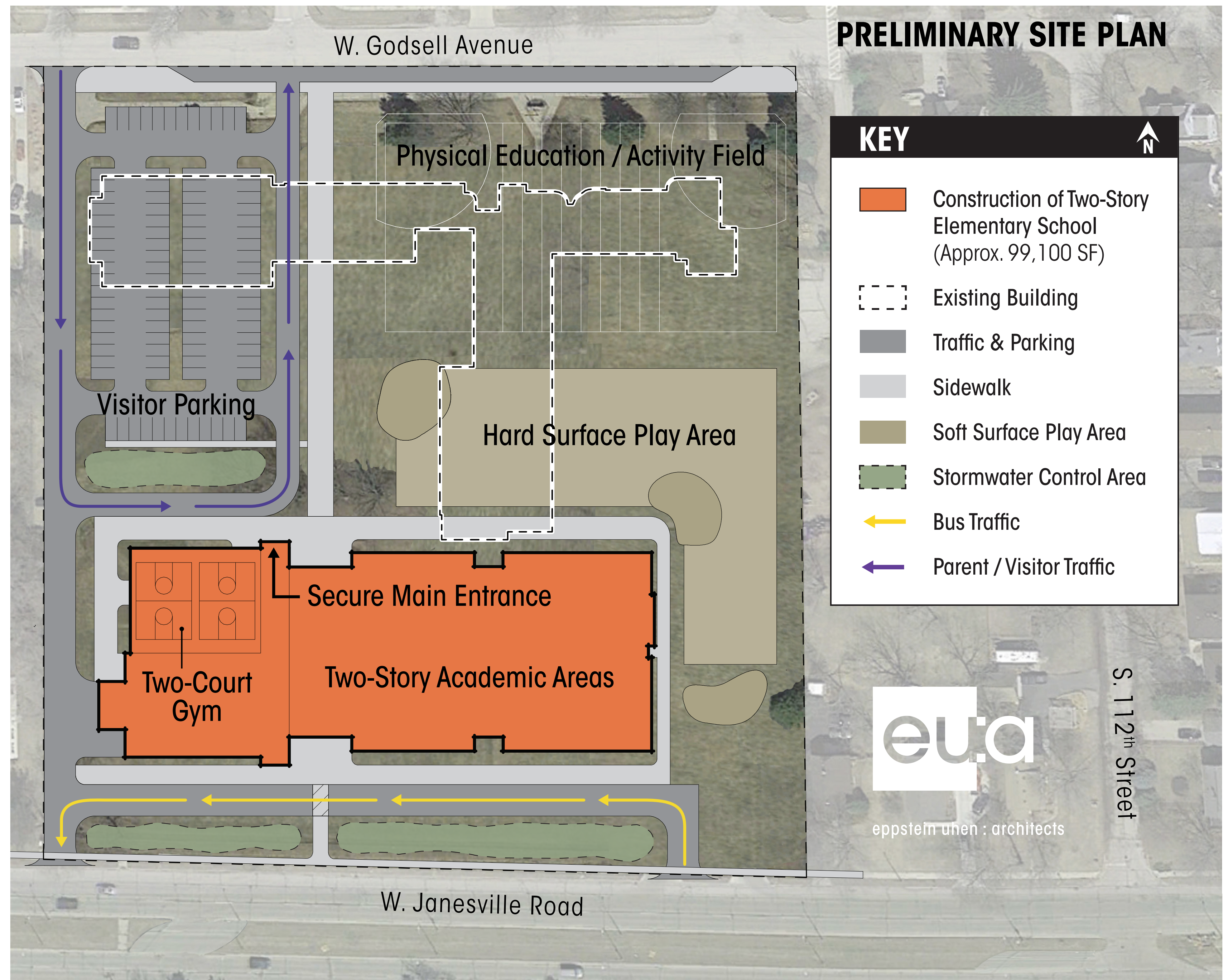
WHITNALL HIGH SCHOOL
POOL, SAFETY & ENERGY NEEDS
NOT TO EXCEED \$6.9 MILLION



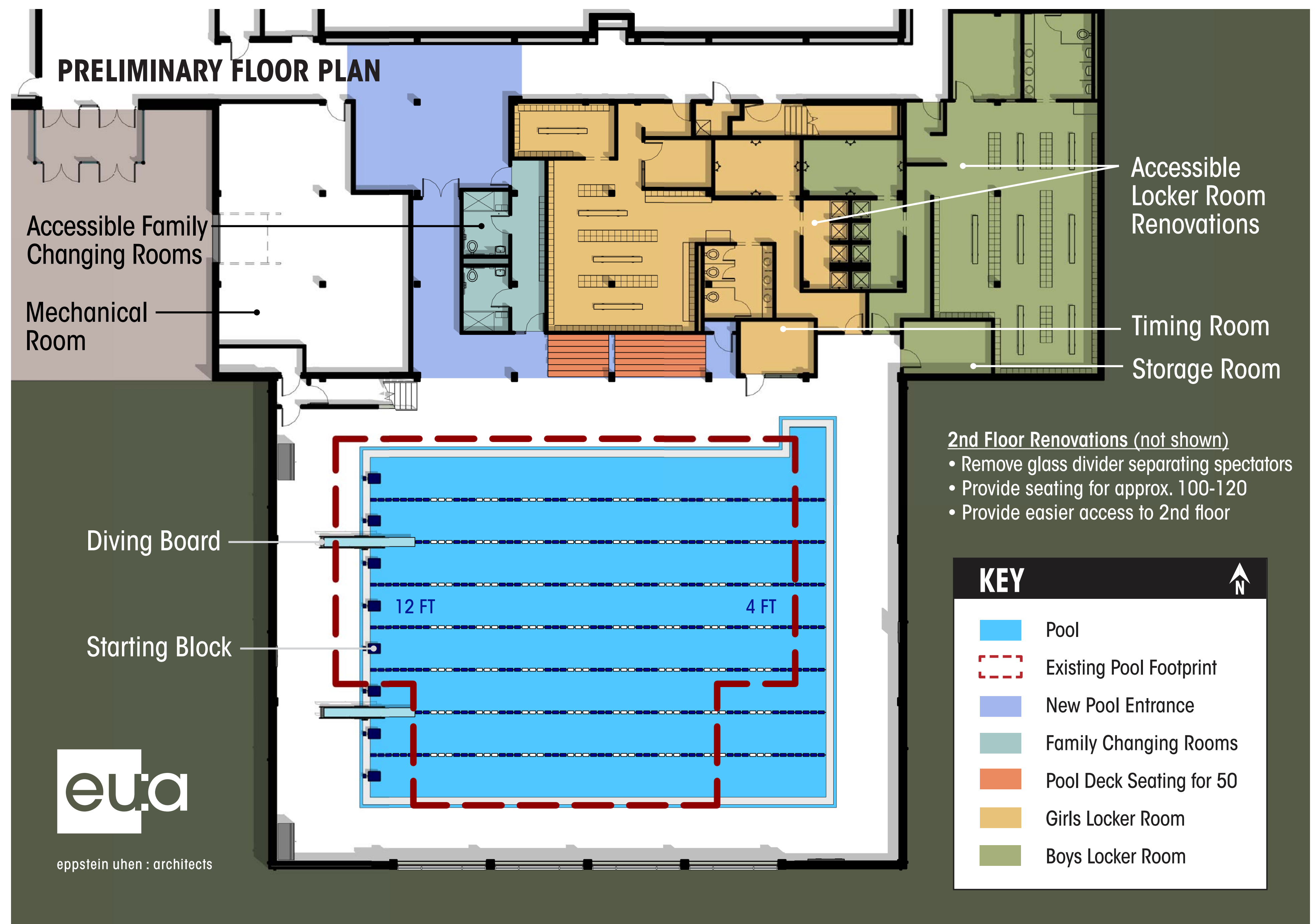
- Renovate and expand the swimming pool by deepening and **widening it from 6 to 8 lanes**, allowing for diving and starting blocks and competitive use
- Create a dedicated pool entrance to provide **community and ADA accessibility**
- Extensively renovate the locker rooms for students and family use (\$4.6 MILLION)



- Address **high-priority safety, maintenance and energy efficiency** projects including:
 - Replacing original windows
 - Replacing deteriorating exterior wall panels
 - Installing air conditioning in main high school gym (\$2.3 MILLION)



Q2 WHS POOL, SAFETY & ENERGY NEEDS



REFERENDUM2015@WHITNALL.COM



414.525.8417



WWW.WHITNALL.COM





**YOUR
VOTE
COUNTS**

FACILITIES REFERENDUM

QUESTION 1

REBUILD HALES CORNERS
ELEMENTARY SCHOOL
NOT TO EXCEED \$22.5 MILLION

WHY?

- Address safety concerns by creating a safe, visible and secure main entrance and improving site traffic flow
- Create flexible, accessible learning spaces that support today's and future students
- Comply with ADA regulations and provide appropriate areas for special education and other required services
- Address energy efficiency concerns with highly energy-efficient building systems

QUESTION 2

WHITNALL HIGH SCHOOL
POOL, SAFETY & ENERGY NEEDS
NOT TO EXCEED \$6.9 MILLION

WHY?

- Create a separate, dedicated pool entrance and reconfigure locker rooms that are ADA accessible
- Bring pool up to regulations to allow for diving and the use of starting blocks for competitive swimming
- Provide energy efficient learning spaces by replacing original windows and exterior panels
- Provide a safe and comfortable high school gymnasium by adding air conditioning

**You will be able to vote on
each question separately.**



REFERENDUM2015@WHITNALL.COM



414.525.8417



WWW.WHITNALL.COM



WHITNALL SCHOOL DISTRICT

5000 S. 116th Street
Greenfield, WI 53228
Ph. 414.525.8400



VOTING INFORMATION

**POLLS ARE OPEN
TUESDAY, APRIL 7**
from 7 a.m. to 8 p.m.

The April 7 referendum falls during the Whitnall School District's spring break. But you can still vote early in person by visiting your municipal clerk's office **NOW through 5 p.m. Friday, April 3:**

MUNICIPAL CLERK LOCATIONS & HOURS

CITY OF FRANKLIN

9229 W. Loomis Rd. | 414-425-7500
8:30 a.m. to 5 p.m. M-F

CITY OF GREENFIELD

7325 W. Forest Home Ave.
414-329-5219 | 8 a.m. to 5 p.m. M-F

VILLAGE OF HALES CORNERS

5365 S. New Berlin Rd. | 414-529-6161
8 a.m. to Noon, 1-5 p.m. M-F



MAKE AN INFORMED DECISION

VISIT the district website at www.whitnall.com and click on the referendum graphic to find :

- Construction Projects, Costs, and Site Plans
- Referendum 2015 Videos
- Frequently Asked Questions
- Tax Impact Calculator and Much More

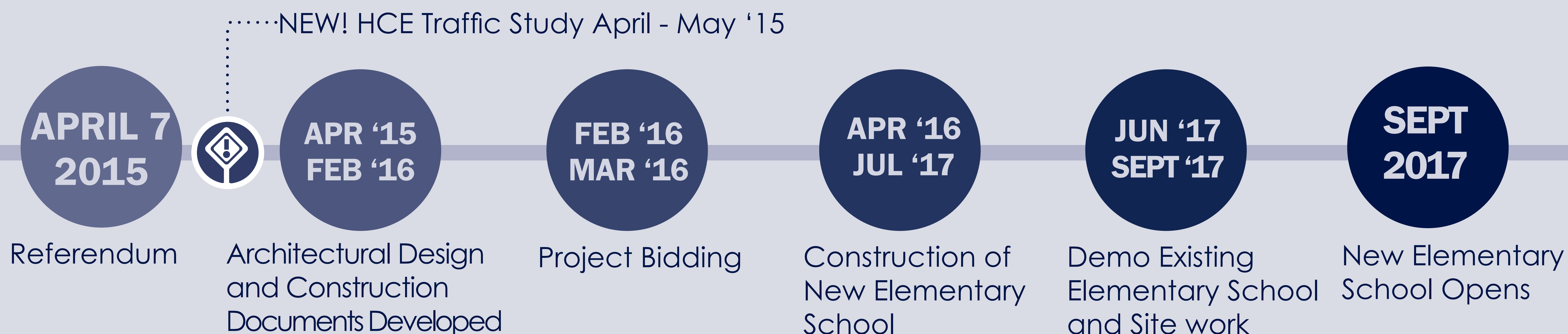


Non-Profit
Org
US Postage
PAID
Milwaukee, WI
Permit No. 1

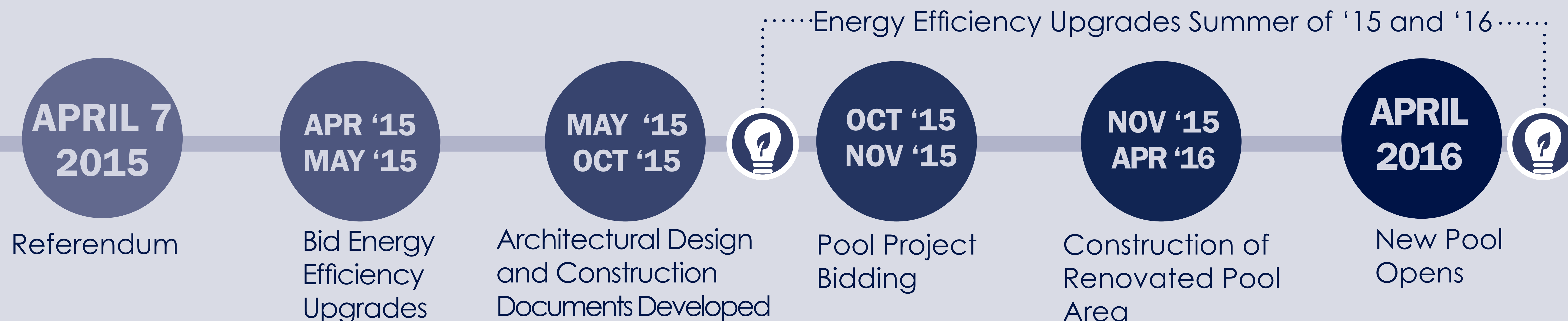


ESTIMATED PROJECT TIMELINES

Q1 REBUILD HALES CORNERS ELEMENTARY



Q2 WHITNALL HIGH SCHOOL ENERGY EFFICIENCY AND POOL UPGRADES





WHITNALL
SCHOOL DISTRICT

VOTE
APRIL 7TH

FACILITY NEEDS REFERENDUM



**YOUR
VOTE
COUNTS**

**FACILITIES
REFERENDUM**

WWW.WHITNALL.COM



GOING ON SPRING BREAK? VOTE EARLY NOW THROUGH 5 P.M. FRIDAY, APRIL 3



**YOUR
VOTE
COUNTS**

**FACILITIES
REFERENDUM**

WWW.WHITNALL.COM



**VOTE TODAY
YOUR VOTE COUNTS!**

WWW.WHITNALL.COM

POLLS OPEN 7AM-8PM



REFERENDUM FACT SHEET

WHAT IS ON THE BALLOT TUESDAY APRIL 7TH?

After years of extensive research, review, and community input, the Whitnall School Board has created a **long-range facilities plan** to meet the needs of our students and reflect the priorities of our community. Based on this feedback, school district residents will have the opportunity to **vote on two separate referendum questions**:

QUESTION 1

REBUILD HALES CORNERS
ELEMENTARY SCHOOL
NOT TO EXCEED \$22.5 MILLION



- **Rebuild elementary** school for approximately 675 students in early childhood and grades K4-5 on the **existing site**
- Retire and remove the existing Hales Corners Elementary and convert that area into expanded parking and activity/green space

QUESTION 2

WHITNALL HIGH SCHOOL
POOL, SAFETY & ENERGY NEEDS
NOT TO EXCEED \$6.9 MILLION



(\$4.6 MILLION)

- Renovate and expand the swimming pool by deepening and **widening it from 6 to 8 lanes**, allowing for diving and starting blocks and competitive use
- Create a dedicated pool entrance to provide **community and ADA accessibility**
- Extensively renovate the locker rooms for students and family use



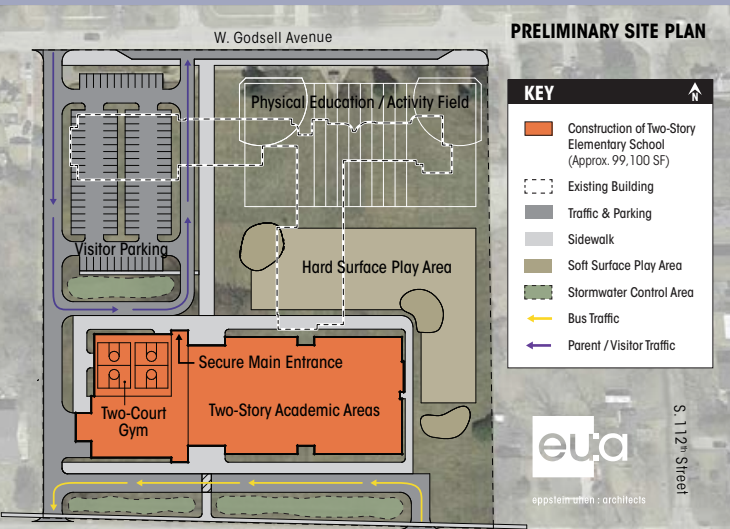
(\$2.3 MILLION)

- Address **high-priority safety, maintenance and energy efficiency** projects including:
 - Replacing original windows
 - Replacing deteriorating exterior wall panels
 - Installing air conditioning in main high school gym

Each question must be voted on individually.

Q1

WHY ARE WE PROPOSING REBUILDING HALES CORNERS ELEMENTARY SCHOOL?



Hales Corners Elementary is the oldest of the District's four schools, **originally built in 1948**, with three significant expansions.

A review of **safety concerns, ADA accessibility, and energy efficiency** reflects an **aging facility**. Many building systems are beyond their life expectancy requiring extensive replacement and academic **learning spaces no longer effectively support students' needs**.

DID YOU KNOW...
portions of HCE
are **66 years**
old?

THE PROPOSED REBUILT SCHOOL WOULD PROVIDE:



Safe, visible and secure main entrance to control visitor access and improve site traffic flow



Flexible, accessible learning environments for all students consistent with today's learning strategies



Space for one-on-one teaching and small to large group collaboration areas



Appropriate areas for special education, and required services such as speech, and occupational/physical therapy



Highly energy-efficient building systems and design to maximize natural light

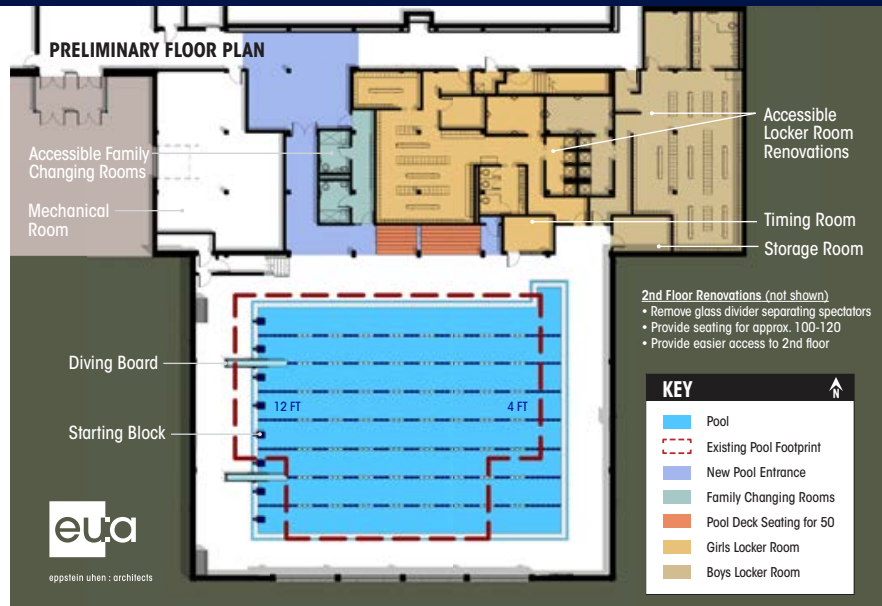
Q2

WHY ARE WE PROPOSING WORK AT WHITNALL HIGH SCHOOL?

A facilities audit of Whitnall High School identified **nearly \$4.7 million of large capital maintenance and energy efficiency related needs**. The School Board has prioritized the **most urgent projects** for **Question #2**.

The **47-year-old pool is the most used facility in the district and cannot be used competitively**

The 47-year-old pool is the most used facility in the district with **more than 500 school and community events** occurring per year. The pool, however, **cannot be used for competitive events and diving is not permitted** at all because it is too shallow. At only six lanes, it limits competitive use even further.



THE PROPOSED PROJECTS WOULD PROVIDE:



New windows and exterior panels to improve energy efficiency and control interior room temperatures



Pictured : Current Conditions at WHS



Air conditioning in the high school gym to improve moisture control and balance temperatures during physical education, athletic practice and events, and special events



A separate, dedicated pool entrance for improved community and ADA accessibility



Reconfigured pool locker rooms with family changing areas, single shower stalls, and improved ADA accessibility



A renovated and expanded (both in depth and width) pool vessel, with the addition of diving and starting blocks, allowing swimmers and divers to use the pool competitively and for the district to host local meets and events

WHAT IS THE TAX IMPACT



ESTIMATED MAXIMUM PROPERTY TAX INCREASE

QUESTION 1 | \$22.5 MIL
(\$1.41 per \$1,000 of property value)

QUESTION 2 | \$6.9 MIL
(\$0.42 per \$1,000 of property value)

| PROPERTY VALUE | PER YEAR | PER MONTH | PER YEAR | PER MONTH |
|----------------|----------|-----------|----------|-----------|
| \$100,000 | \$141 | \$11.75 | \$ 42 | \$3.50 |
| \$200,000 | \$282 | \$23.50 | \$ 84 | \$7.00 |
| \$300,000 | \$423 | \$35.25 | \$126 | \$10.50 |

If the referendum is approved, taxpayers will note the impact on the December 2015 tax bill. Preliminary tax impact estimates for a 20-year borrowing are based on an interest rate of 3.50% (in January 2015). Estimates provided by financial advisors at Robert W. Baird & Co.

Pictured : Current WHS Pool, Constructed in 1968



REFERENDUM2015@WHITNALL.COM



414.525.8417



WWW.WHITNALL.COM





REFERENDUM INFORMATION



REFERENDUM2015@WHITNALL.COM



414.525.8417



WWW.WHITNALL.COM





SURVEY FINDINGS

VOTING INFORMATION

A majority of Whitnall School District residents would likely **support a referendum that addresses safety concerns, handicap-accessibility issues, maintenance problems and today's teaching strategy needs at Hales Corners Elementary**, according to the results of a district-wide facilities needs survey conducted last month.

Nearly 1,650 residents and staff, an 18% response rate, responded to the survey in November.

63%

of non-staff resident respondents said they would likely support a referendum to address the needs at Hales Corners Elementary, while 18 percent were undecided

64%

of non-staff resident respondents would probably or definitely support addressing maintenance needs and energy efficiency projects at Whitnall High School and Edgerton Elementary

TOP CHOICE

Building a new Hales Corners Elementary school was the top choice among the three options presented in the survey, beating out the renovation of HCE and adding on to Whitnall Middle School

The swimming pool/locker room project received 51% support among all residents, including 62% of parent residents

62%

DID YOU KNOW? THE APRIL 7 REFERENDUM FALLS DURING THE DISTRICT'S SPRING BREAK?

You can still vote, even if you're going out of town. Absentee ballots are available for any registered voter. You can download an application for an absentee ballot at **GAB.WI.GOV/FORMS/GAB-121-ENGLISH**

You may also make a request for an absentee ballot by mail or in person at your municipal clerk's office. Your written request must list your voting address with the municipality where you wish to vote, the address where the absentee ballot should be sent, if different, and your signature. The deadline for requesting an absentee ballot by mail is 5 p.m. Thursday, April 2.

Absentee voting through the mail will begin Tuesday, March 17 and end Thursday, April 2.

Absentee voting in person - also known as **EARLY VOTING** will begin Monday, March 23, at your municipal clerk's office. (hours and locations below). You may request and vote an absentee ballot up until 5 p.m. Friday, April 3.

MUNICIPAL CLERK LOCATIONS & HOURS

City of Franklin | 9229 W. Loomis Rd.
414-425-7500 | Hours : 8:30 a.m. to 5 p.m. M-F
City of Greenfield | 7325 W. Forest Home Ave.
414-329-5219 | Hours: 8 a.m. to 5 p.m. M-F
Village of Hales Corners | 5365 S. New Berlin Rd.
414-529-6161 | Hours: 8 a.m. to Noon, 1-5 p.m. M-F

WHITNALL SCHOOL DISTRICT

5000 S. 116th Street
Greenfield, WI 53228
Ph. 414.525.8400

BUILDING BRIGHT FUTURES DID YOU KNOW?

"WHITNALL'S HIGH SCHOOL RECORDED HIGHEST ACT SCORES IN SCHOOL HISTORY IN 2014"

"WHITNALL'S DPI REPORT CARD EXCEEDS EXPECTATIONS FOR SECOND STRAIGHT YEAR"

"WHITNALL'S HIGH SCHOOL EARNED A SPOT ON THE COLLEGE BOARD'S AP DISTRICT HONOR ROLL"

Non-Profit
Org
US Postage
PAID
Milwaukee, WI
Permit No. 1

WHITNALL REFERENDUM 2015

After years of extensive research, review, and community input, the Whitnall School Board has created a long-range facilities plan to meet the needs of our students and reflect the priorities of our community. Based on this feedback, school district residents will have the opportunity to vote on two separate referendum questions.



TO LEARN MORE...

- VISIT** the district website at **www.whitnall.com** and click on the referendum graphic
- VIEW** two short videos available on the district website highlighting the needs behind each referendum question
- TOUR** Hales Corners Elementary on **March 18, 12-2:30 p.m. and March 20, 12-2:30 p.m.** or Whitnall High School on **March 18, 1:30 to 4 p.m. and March 20, 1:30-4 p.m.**
- ATTEND** a Referendum Information Night at Hales Corners Elementary on **March 10, 5:30-7 p.m.** and at Whitnall High School on **March 12, 6-7:30 p.m.**
- STOP** at an Open Door session to talk one-on-one with administrators and School Board members, **Wednesdays from 4-5 p.m.** at HCE through April 1, and **Thursdays from 6:30-8 a.m.** in the Community Board Room through April 2
- More Open Door sessions have been added to accommodate those who want to attend in the evening or over lunch. Come to the Community Board Room between **5:30-6:30 p.m. Monday, March 9, or Monday, March 23**, or between **noon and 1 p.m. Friday, March 13**. There will also be an Open Door session at HCE between **noon and 1 p.m. Wednesday, March 11**.
- EMAIL** your questions to **referendum2015@whitnall.com**



WHAT IS ON THE BALLOT ON APRIL 7TH?

QUESTION 1

Shall the Whitnall School District, Milwaukee County, Wisconsin be authorized to issue pursuant to Chapter 67 of the Wisconsin Statutes, general obligation bonds in an amount not to exceed \$22,500,000 for the public purpose of paying the cost of constructing a new elementary school at the site of the existing Hales Corners Elementary School, demolishing the existing school, and acquiring related fixtures, furnishings and equipment? ☐ YES ☐ NO

QUESTION 2

Shall the Whitnall School District, Milwaukee County, Wisconsin be authorized to issue pursuant to Chapter 67 of the Wisconsin Statutes, general obligation bonds in an amount not to exceed \$6,900,000 for the public purpose of paying the cost of energy efficiency projects at Whitnall High School; the renovation and expansion of the High School swimming pool and locker rooms; and acquiring related fixtures, furnishings and equipment? ☐ YES ☐ NO

Each question must be voted on individually.



REFERENDUM2015@WHITNALL.COM



414.525.8417



WWW.WHITNALL.COM

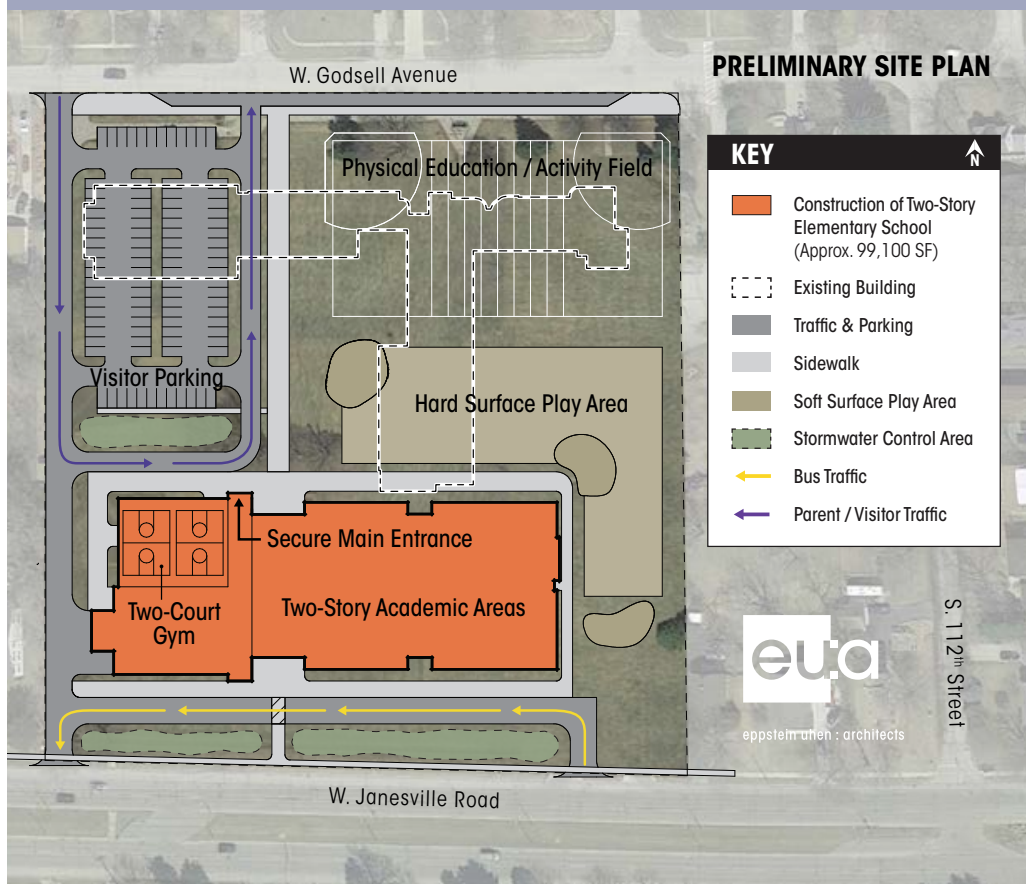


QUESTION 1

REBUILD HALES CORNERS ELEMENTARY SCHOOL
NOT TO EXCEED \$22.5 MILLION



WHY ARE WE PROPOSING REBUILDING HALES CORNERS ELEMENTARY SCHOOL?



Question 1 includes rebuilding the elementary school for approximately 675 students in early childhood and grades K4-5 on the existing site. This would result in retiring and removing the existing Hales Corners Elementary and converting that area into expanded parking and activity/green space.

THE PROPOSED REBUILT ELEMENTARY SCHOOL WOULD PROVIDE:

- Appropriate areas for special education, and required services such as speech, and occupational/physical therapy
- Highly energy- efficient building systems and design to maximize natural light
- Safe, visible and secure main entrance to control visitor access and improve site traffic flow
- Space for one-on-one teaching and small to large group collaboration areas
- Flexible, accessible learning environments for all students consistent with today's learning strategies

Hales Corners Elementary is the oldest of the District's four schools, **originally built in 1948**, with three significant expansions.

A review of **safety concerns, ADA accessibility, and energy efficiency** reflects an **aging facility**.

Many building systems are beyond their life expectancy requiring extensive replacement and academic **learning spaces no longer effectively support students' needs**.



HCE learning space divided by panels

QUESTION 2

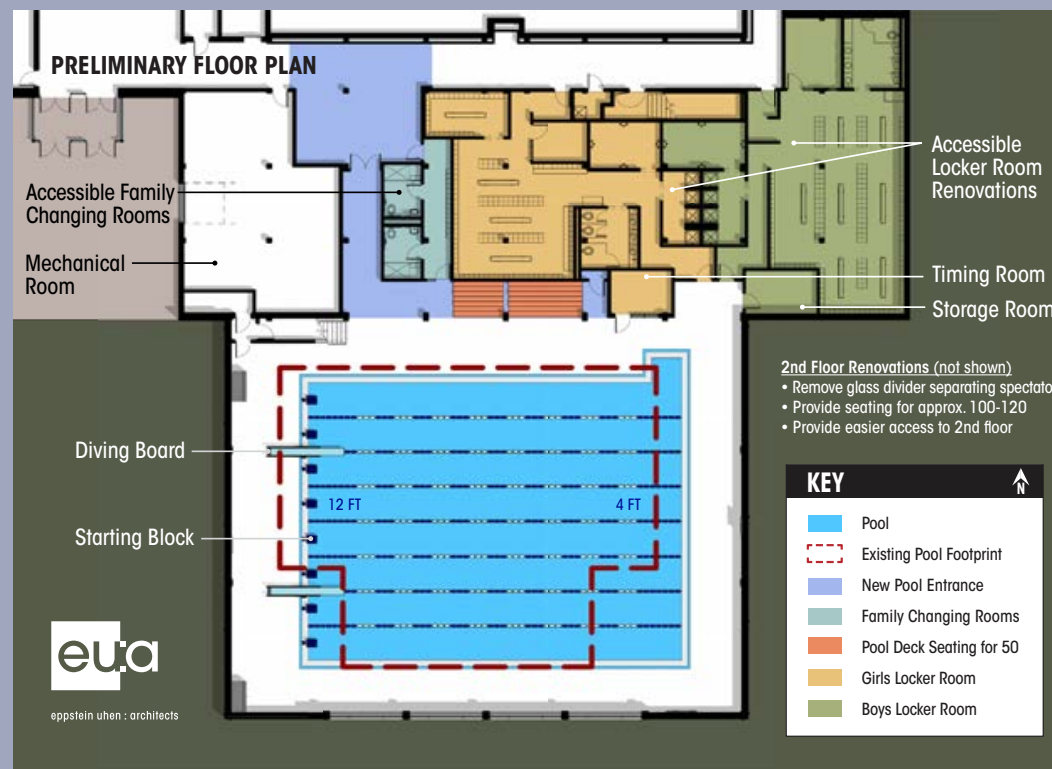
WHITNALL HIGH SCHOOL POOL, SAFETY & ENERGY NEEDS
NOT TO EXCEED \$6.9 MILLION



WHY ARE WE PROPOSING WORK AT WHITNALL HIGH SCHOOL?

A facilities audit of Whitnall High School identified nearly \$4.7 million of large capital maintenance and energy efficiency related needs. The School Board has prioritized this list to \$2.3 million of the most urgent projects.

Additionally, the 47-year-old pool is the most used facility in the district with more than 500 events occurring per year, and is not ADA accessible. It cannot be used for competitive events and diving is not permitted at all because it is too shallow. At only six lanes, it limits competitive use even further.



Original Windows and Failing Exterior Panels



Six Lane Pool, Constructed in 1968

THE PROPOSED CHANGES AT WHS WOULD PROVIDE:

- New windows and exterior panels to improve energy efficiency and control interior room temperatures
- Air conditioning in the high school gym to improve moisture control and balance temperatures during physical education, athletic practice and events, and special events
- A renovated and expanded (both in depth and width) pool vessel, with the addition of diving and starting blocks, allowing swimmers and divers to use the pool competitively
- A separate, dedicated pool entrance for community and ADA accessibility
- Reconfigured pool locker rooms with family changing areas, single shower stalls, and ADA accessibility

REFERENDUM FAQ'S



Q1 : HCE

WHAT IS THE PROJECT TIMELINE?

APRIL 7
2015

Referendum

APR '15
FEB '16

Architectural Design and Construction Documents Developed

FEB '16
MAR '16

Project Bidding

APR '16
JUL '17

Construction of New Elementary School

JUN '17
SEPT '17

Demo Existing Elementary School and Site work

SEPT
2017

New Elementary School Opens

Q2 : WHS

APRIL 7
2015

Referendum

APR '15
MAY '15

Bid Energy Efficiency Upgrades

MAY '15
OCT '15

Architectural Design and Construction Documents Developed

OCT '15
NOV '15

Pool Project Bidding

NOV '15
APR '16

Construction of Renovated Pool Area

APRIL
2016

New Pool Opens

Energy Efficiency Upgrades Summer of '15 and '16

WHAT IS THE TAX IMPACT?

ESTIMATED MAXIMUM PROPERTY TAX INCREASE

| QUESTION 1 \$22.5 MIL (\$1.41 per \$1,000 of property value) | | QUESTION 2 \$6.9 MIL (\$0.42 per \$1,000 of property value) | |
|---|----------------------|--|--|
| PROPERTY VALUE | PER YEAR PER MONTH | PER YEAR PER MONTH | |
| \$100,000 | \$141 \$11.75 | \$ 42 \$3.50 | |
| \$200,000 | \$282 \$23.50 | \$ 84 \$7.00 | |
| \$300,000 | \$423 \$35.25 | \$126 \$10.50 | |

If the referendum is approved, taxpayers will note the impact on the December 2015 tax bill. Preliminary tax impact estimates for a 20-year borrowing are based on an interest rate of 3.50% (in January 2015). Estimates provided by financial consultants at Robert W. Baird & Co.



Students at HCE often use hallway spaces for testing.



Students at HCE using hallway for instruction.

COST BREAKDOWN QUESTION 1

| | |
|------------------------------------|---------------------|
| Abatement and Demo of HCE | 802,000 |
| Furnishing, Equipment & Technology | 1,100,000 |
| Site work, Site Improvements | 1,300,000 |
| Design and Construction | 19,298,000 |
| Total | \$22,500,000 |

QUESTION 2

| | |
|---------------------------------------|--------------------|
| Air Condition the Gymnasium | 340,000 |
| Replace the Curtainwall | 1,230,000 |
| Pool Vessel | 1,998,000 |
| Design and Construction of Renovation | 3,332,000 |
| Total | \$6,900,000 |



GOING ON SPRING BREAK?

VOTE EARLY NOW THRU FRIDAY, APRIL 3

YOUR VOTE COUNTS

POLLS ARE OPEN
TUESDAY, APRIL 7
from 7 a.m. to 8 p.m.

The April 7 referendum falls during the Whitnall School District's spring break. But you can still vote early in person by visiting your municipal clerk's office **NOW** through 5 p.m. Friday, April 3:

LOCATIONS & HOURS

CITY OF FRANKLIN

9229 W. Loomis Rd. | 414-425-7500
8:30 a.m. to 5 p.m. M-F

CITY OF GREENFIELD

7325 W. Forest Home Ave.
414-329-5219 | 8 a.m. to 5 p.m. M-F

VILLAGE OF HALES CORNERS

5365 S. New Berlin Rd. | 414-529-6161
8 a.m. to Noon, 1-5 p.m. M-F

FIND DETAILS ON POLLING LOCATIONS AT WWW.WHITNALL.COM



**VOTE TODAY
YOUR VOTE COUNTS!**

WWW.WHITNALL.COM

POLLS OPEN 7AM-8PM